

Spring has sprung and we are a quarter of the way through the year.
Where has the time gone?

May is a very busy month, three bank holidays, including the coronation of King Charles III and Queen Camilla on Saturday 6th May.

We are looking forward to seeing you to hear all about your coronation celebrations.

46 years in business.



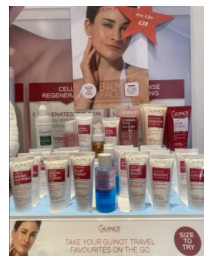
At the end of the month we have the Whitsun bank holiday so we will be **closing on Monday 29th, Tuesday 30th and Wednesday 31st May.**
We looking forward to seeing you all on Thursday 1st June bright and early.

I would like to thank all our clients for their support particularly over the last 18 months, having had a new hip, two new shoulders and having basically been rebuilt.

You have all been so kind and thoughtful to myself and the team and I am sure you will agree they have run things like clockwork and been fantastic!!!

We are going to see all the new and exciting treatments constantly evolving and are always striving to improve our knowledge and service to enable us to care and look after you all.

Ready for travel Guinot and Thalgo are listening to us fantastic sizes and selection of items to mix and match, some are 3 for £28.



June

Father's Day, why not treat the man in your life,
we have vouchers, products and personalised treatments available.



We also have the start of the wedding season, school proms to celebrate the end of another academic year and of course all the fun of Ascot, Henley and summer holidays to start to prepare ourselves for.

We have many more treatment days the dates of which are still to be finalised so watch this space!

Mavala

Did you know Mavala have care and advice for cancer therapy?

They have launched 12 mini white top polishes which are exclusive Biosource mini fire colours, plant and mineral origin formula contains 85% to 89% depending from the shades from sugar cane, rice, beetroot, wood pulp and corn.

We will be holding some Mavala prescriptive days in due course.



Kerastase

Are updating the famous nutritive range and expanding the sensitivity family.

Ask for a consultation analysis of your hair and scalp.

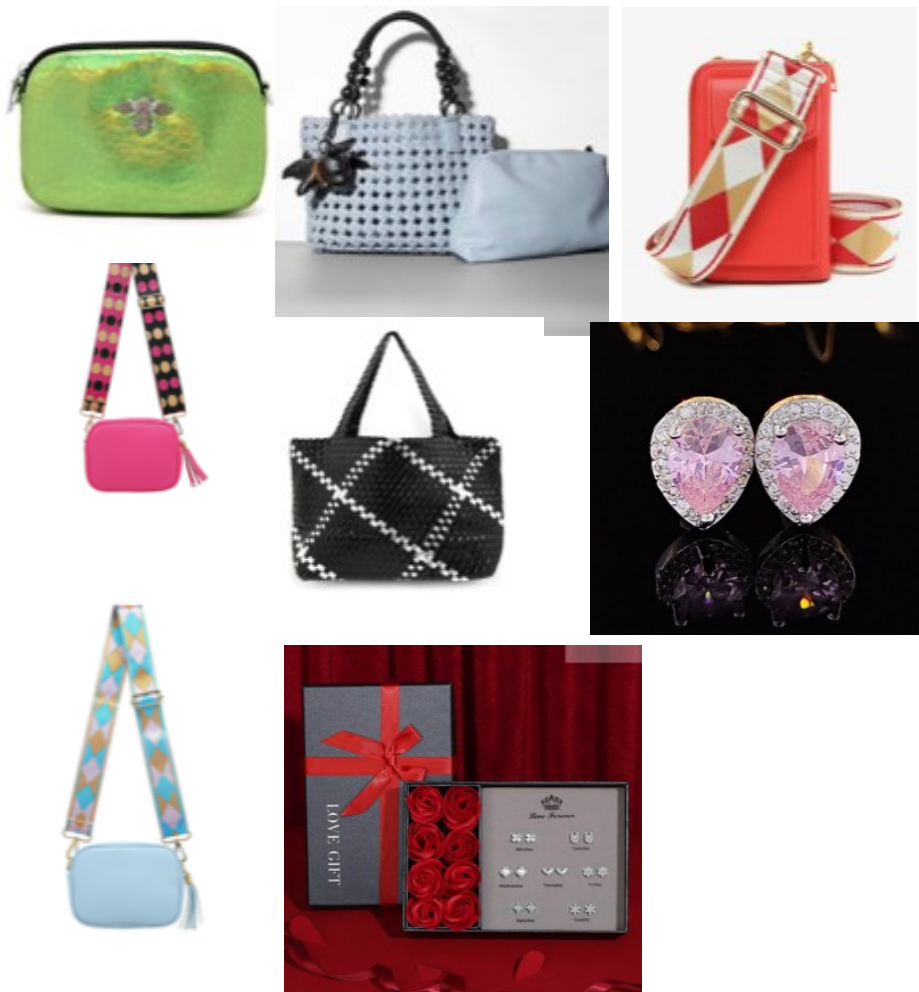
Nutritive Range



Symbiose Range



Lots of accessories available!!!!



Ernie Clark

Creative Hair Design

&

Beauty Spa



26/6 Burnett Road

Stretly

Sutton Coldfield

Phone 0121 353 9588

Email: ernie@ernieclark.co.uk

Facebook: Ernie Clark Hair and Beauty Spa

Instagram: [ernieclarkhairbeauty](https://www.instagram.com/ernieclarkhairbeauty)

Google Street View



GUINOT CROWN SALON